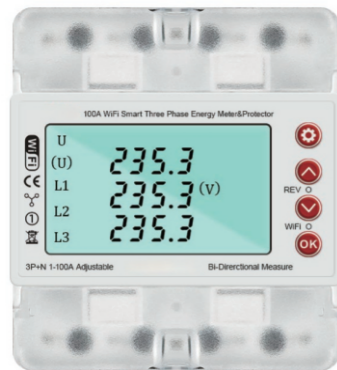


# 100A WiFi智能三相电能表保护器 用户手册



## 主要功能:

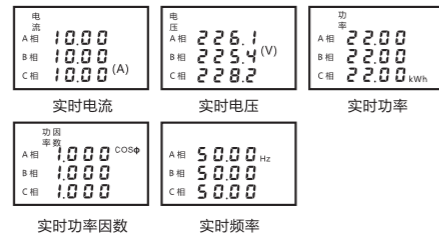
1. 过压保护
2. 欠压保护
3. 过流保护
4. 欠流保护
6. 延时保护
7. 时控开关
8. 电压不平衡保护
9. 电流不平衡保护
10. 缺相保护
11. 相序保护
12. 双向用电量监测

每个参数可设置动作阈值和开/关。

## 背光:

1. 点亮时间: 无操作180秒
2. 颜色: 正常工作时背光颜色为白色; 当继电器断开时变成红色。

上下按键切换显示三相的电压、电流、功率、功率因素、频率。



## 三、故障记录:

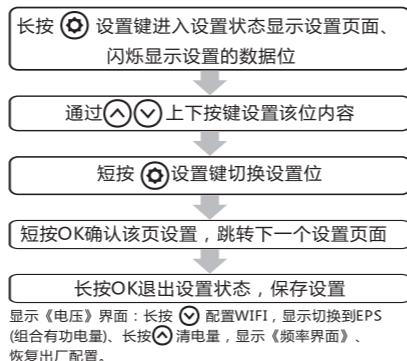
记录过压、欠压、过载、小电流保护、电压不平衡、电流不平衡、相序保护。

注: 涂鸦APP记录

## 四、WIFI指示灯状态:

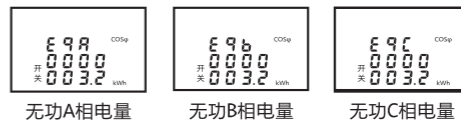
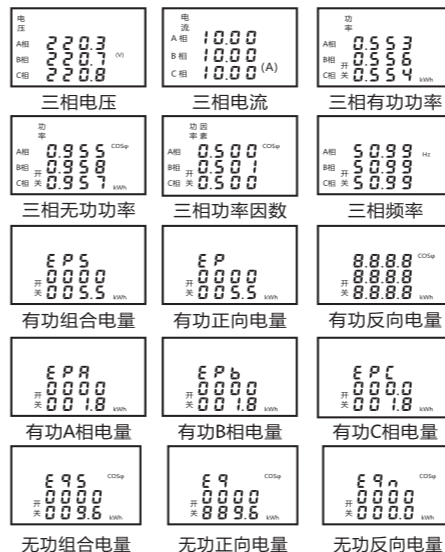
- 1快闪表示等待发现WIFI信号、
- 2慢闪表示WIFI离线状态、
- 3长亮表示WIFI已连接。

## 五、功能设置:



显示《电压》界面: 长按 配置WIFI, 显示切换到EPS (组有功电量)、长按 清电量, 显示《频率界面》、恢复出厂配置。

1. 上下按键切换显示三相的电压、电流、功率、功率因素、频率。



无功A相电量

无功B相电量

无功C相电量

## 六、故障记录:

记录过压、欠压、过载、小电流保护、电压不平衡、电流不平衡、相序保护。

注: 涂鸦APP记录

## 七、WIFI指示灯状态:

- 1快闪表示等待发现WIFI信号、
- 2慢闪表示WIFI离线状态、
- 3长亮表示WIFI已连接。

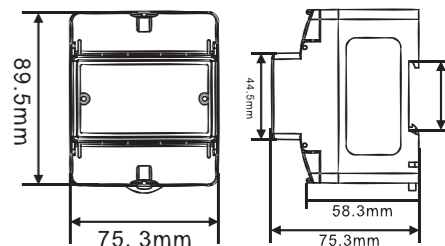
## 八、安装及使用条件:

- 1、温度: -20°C~60°C
- 2、湿度: ≤ 85%
- 3、海拔高度: 不超过2000m
- 4、污染等级: 3级
- 5、安装: 35MM导轨安装
- 6、接线能力: 35平方毫米及以下绝缘铜导线。

## 九、注意事项:

1. 本产品无隔离功能, 维修线路时请断开前级断路器开关。
2. 本产品零线(N线)直接接通, 无断开功能。
3. 保护器必须按标志接线, 不得接错。
4. 本产品虽有限流保护功能但不能代替断路器, 请在线路前端安装如DZ47、C65等断路器作短路保护。
5. 在使用前请拧紧卡线螺钉, 防止接触不良而损坏产品。

## 十、安装接线及尺寸:



## 十一、保证期限:

从出厂日起12个月内, 有产品质量问题, 且封条完好, 本厂将给予免费更换。36个月内, 有产品质量问题, 且封条完好, 本厂将给予免费维修。

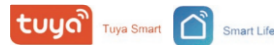
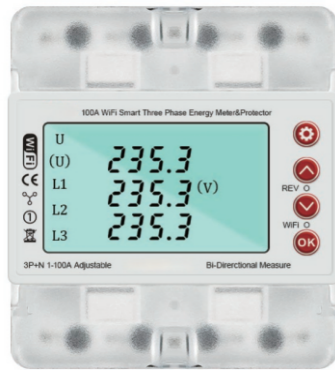
功能	设置参数范围	出厂默认设置	功能描述
保护延迟	----(手动) 0000-9999秒(s)	5秒	为防止上电延时保护, 为防止停电突然来电瞬间电压或浪涌过高损坏设备。
电压上限	60V-300V	275V	电压最高限设300V,如: 设300V以上电压, 保存数据后也是300V (可分相设置)
电压下限	60-300V	175V	电压最低限设60V,如: 设60V以下电压, 保存数据后也是60V。 (可分相设置)
欠压过压保护延时	----(手动) 0000-9999秒(s)	20秒	电压高于或低于设定值, 保护器自动拉闸, 当电压恢复正常值后在设定延时时间合闸。
电流下限	0.0-60A	0.0 A	如: 设 电流下限10A, 工作电流低于10A会在设定延时间内拉闸。(可分相设置)

---- 表示为: 手动恢复  
0000表示为: 立即恢复

功能	设置参数范围	出厂默认设置	功能描述
电流过载下限延时	0000-9999秒(s)	5秒	如: 设电流下限过载延时5秒, 工作电流低于设定值延时5秒拉闸。
电流下限保护延时	0000-9999秒(s)	20秒	如: 设电流下限保护延时20秒, 工作电流正常后在设定值延20秒合闸。
电流上限	0.1-80A	80A	如: 设电流上限80A, 工作电流高于80A会在设定延时间内拉闸。(可分相设置)
电流过载上限延时	0000-9999秒(s)	5秒	如: 设 电路上限过载延时5秒, 工作电流高于设定值延时5秒拉闸。
电流上限保护延时	0000-9999秒(s)	60秒	如: 设电路上限保护延时60秒, 工作电流正常后在设定值延时60秒合闸。

功能	设置参数范围	出厂默认设置	功能描述
电压不平衡保护%	开/关 0000-9999%	关	ABC相电压最高和最低值超过设定%值立即拉闸。
电流不平衡保护%	开/关 0000-9999%	关	ABC相电流最高和最低值超过设定%值立即拉闸。
相序保护	开/关	关	ABC相序如有错相立即拉闸。

# 100A WiFi Smart Three Phase Energy Meter&Protector User's Manual

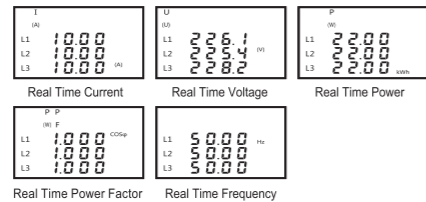


### Main Functions:

1. Over Voltage Protection
  2. Under Voltage Protection
  3. Over Current Protection
  4. Under Current Protection
  6. Delay Protection
  7. Timer Switch
  8. Voltage Imbalance Protection
  9. Current Imbalance Protection
  10. Shortage Phase Protection
  11. Phase Sequence Protection
  12. Bidirectional Energy Monitor
- Each parameter can be set with action threshold and On/Off.

### Backlight:

1. Light Up Time: The display will keep lighting up for 180 seconds without any actions.
2. Color: The backlight color is white during normal working, it will turn to be red when the relay disconnected. Press the up and down buttons to switch and display the Voltage, Current, Power Consumption, Power Factor Frequency.



### Fault Record:

Record Overvoltage, Undervoltage, Overload, Low Current protection, Voltage Imbalance, Current Imbalance and Phase Sequence Protection. Note: Tuya App Record

### Wifi Indicator Status:

1. Flashing indicates searching for WiFi signal.
2. Slow flashing indicates WiFi is offline.
3. Long lights indicates WiFi is connected.

### Function Settings :

Long press and hold the setting button to enter the setting status display setting page, flashing the set data bits

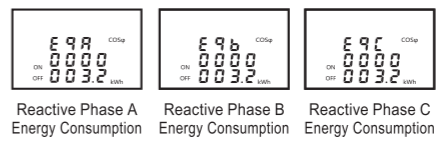
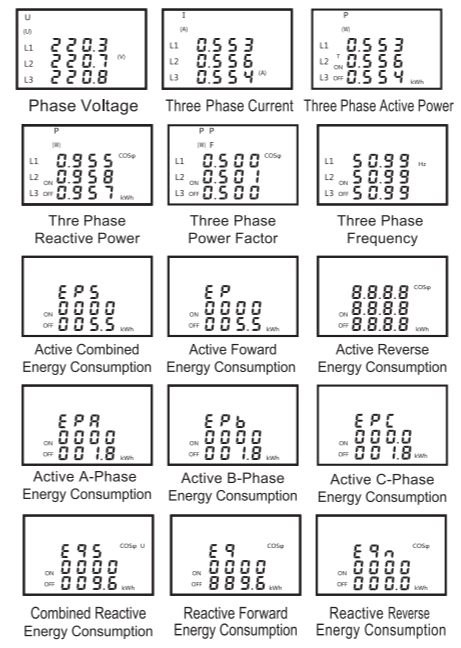
Set the content of this bit through the up and down buttons

Short press the setting key to switch the setting bit

Short press OK to confirm the settings on this page and jump to the next settings page

Long press OK to exit the setting state and save the settings

Display the "Voltage" interface: Long press and hold to configure WIFI, and switch the display to EPS (Combined active power), long press and hold to clear the power, and display the "Frequency Interface" Restore factory configuration.



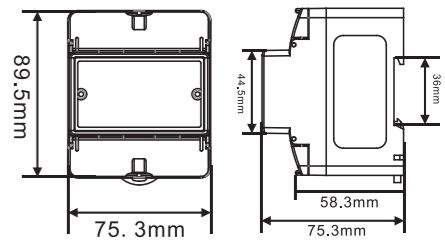
### Installation and Usage Conditions:

1. Temperature: -20°C~60°C
2. Humidity: <85%
3. Altitude: not exceeding 2000m
4. Pollution level: Level 3
5. Installation: 35MM Din Rail
6. Wiring Capacity: Insulated copper wire of 35 mm<sup>2</sup> or below.

### Precautions:

1. This product has no isolation function. Please disconnect the front stage when repairing the circuit breaker switch.
2. The zero line (N line) of this product is directly connected without disconnection function.
3. The protector must be wired according to the markings and must be connected correctly.
4. Although this product has limited current protection function, it cannot replace circuit breakers, please install circuit breakers such as DZ47 or C65 at the front or the end of the line for short circuit protection.
5. Before use, please tighten the clamp screw to avoid product damaged caught by poor connection.

### Installation Wiring and Dimensions:



### Guarantee:

Within 12 months from the date of production, if there are any product quality issues, our factory will provide free replacement.

Function	Set Parameter Range	Factory Default Settings	Function Description
Power Restoration Delay Protection	----(Hand Movement) 0000-9999Second(s)	5S	This function is to protect the device being destroyed by instantaneous high voltage and surge during power restoration.
Over Voltage Limit	60-300V	275V	If the over voltage limit is set at 300V, when the voltage is over 300V, the device will automatically switch off. (Every phase can be set separately)
Under Voltage Limit	60-300V	175V	If the under voltage limit is set at 60V, when the voltage is under 60V, the device will automatically switch off. (Every phase can be set separately)
Under Voltage and Over Voltage Protection Delay	----(Hand Movement) 0000-9999Second(S)	20S	If the voltage is over or under the set value, the device will automatically switch off and when the voltage returns to normal value it will revert after the set delay time.
Under Current Limit	0.0-60A	0.0A	If the under current limit is set at 60A, the device will automatically switch off when the current is under 60A after the set delay time. (Every phase can be set separately)

---- Stands for: Manual Recovery  
0000 Stands for: Immediate Recovery

Function	Set Parameter Range	Factory Default Settings	Function Description
Under Current Limit Delay Protection	0000-9999Second(S)	5S	When the current is under the setting value, the device will automatically switch off after the delay time.
Under Current Limit Protection Delay	0000-9999Second(S)	20S	When the current recovers to be over the setting value, the device will automatically switch on after the delay time.
Over Current Limit	0.1-80A	80A	If the over current limit is set at 80A, the device will automatically switch off when the current is over 80A after the set delay time. (Every phase can be set separately)
Over Current Limit Delay Protection	0000-9999Second(S)	5S	When the current is over the setting value, the device will automatically switch off after the delay time.
Over Current Limit Protection Delay	0000-9999Second(S)	60S	When the current recovers to be under the setting value, the device will automatically switch on after the delay time.

Function	Set Parameter Range	Factory Default Settings	Function Description
Uneven Voltage Balance Protection%	On/off 0000-9999%	On	The device will switch off if the highest or lowest voltage of ABC Phase exceed the set value.
Current Unevenness Balance Protection%	On/off 0000-9999%	On	The device will switch off if the highest or lowest current of ABC Phase exceed the set value.
Phase -Sequence Protection	On/off	On	The device will switch off if there is any Phase error in the ABC phase sequence.